

Tacony CFC

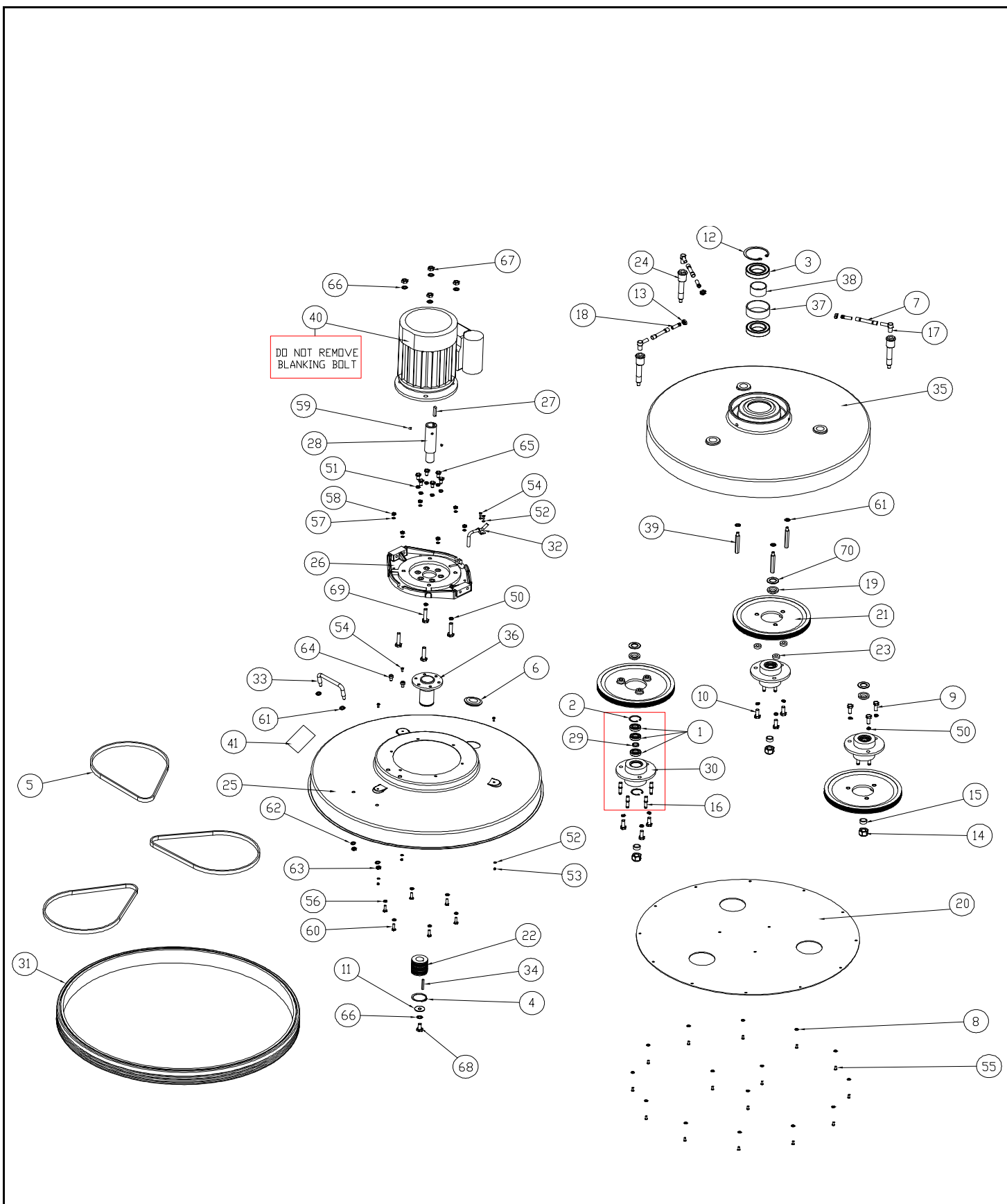
CR76/EURO Handle Assembly

Drawing Number: 09-1047-0000

Date:	3/5/2009		
Machine:	CR76/EURO		
Reference Parts List:	05-4496-0000		
Modified By:	G SECHERE	DESCRIPTION OF CHANGE	ECN #
Revision:	B	COMPONENTS CHANGE	N/A

Date:	3/5/2009		
Machine:	CR76/EURO		
Reference Drawing Number:	09-1047-0000		
Modified By:	G SECHERE	DESCRIPTION OF CHANGE	ECN #
Revision:	B	COMPONENTS CHANGE	N/A

Ref. No.	Part No.	Part Description	Qty
CORE COMPONENTS			
1	02-3950-0000	3/4 in EXTERNAL CIRCLIP	1
2	02-4065-0000	SLEEVING 2MM CLEAR	4"
3	02-4175-0000	HANDLE GRIP	2
4	02-4176-0000	GROMMET	1
5	02-4186-0000	CABLE GLAND	1
6	02-4311-0000	PENNY WASHER	1
7	02-4149-0000	TYRAP - SMALL (BI) *NOT SOWHN*	7
8	02-3702-0000	SLEEVING FOR CABLE (10/13AMP) *NOT SHOWN*	40"
10	03-6185-0000	EARTH POINT LABEL	1
11	03-6953-0000	LOCKING HANDLE	1
13	03-6957-0000	PIVOT	1
14	03-7281-0000	LEVER	1
16	03-7298-0000	SWITCH CAM LEVER	1
17	03-7300-1000	HANDLE BOX (FRONT & REAR SET)	1
19	03-7433-0000	CAM FOLLOWERS	1
20	03-7434-0000	SPRING	1
21	03-7435-0000	REVERSE SWITCH CAMS	1
22	03-7660-0000	CABLE HOOK	1
23	03-8005-0000	CR / RHD COMMON HANDLE FRAME	1
29	02-4026-0000	P CLIP (DROPLEAD)	1
30	02-4219-0000	P CLIP (MAINS CABLE)	1
31	04-3416-0000	SUPPRESSOR RF 0.47UF	1
33	04-3576-0000	CRIMP TERMINAL PRE-INSULATED *NOT SHOWN*	5
32	04-3480-0000	TERMINAL (FORK) *NOT SHOWN*	2
34	04-3481-0000	TERMINAL (SPRING SPADE) *NOT SHOWN*	4
35	04-3602-0000	TERMINAL (RING) *NOT SHOWN*	2
36	04-3681-0000	MAINS CABLE 1.5MM SQ GREY PVC 3 CORE	600"
37	04-3686-0000	SWITCH (MOMENTARY)	1
38	04-3809-0000	SWITCH (CAM OPERATED)	1
43	04-3553-0000	CABLE 2.5MM 14AWG BLACK *NOT SHOWN* (DROPLEAD)	158"
44	04-3556-0000	CABLE 2.5MM 14AWG BLUE *NOT SHOWN* (DROPLEAD)	79"
45	04-3558-0000	CABLE 2.5MM 14AWG BROWN *NOT SHOWN* (DROPLEAD)	79"
46	04-3559-0000	CABLE 2.5MM 14AWG GREEN/YELLOW *NOT SHOWN* (DROPLEAD)	79"
47	04-3552-0000	CABLE 2.5MM 14AWG RED *NOT SHOWN* (DROPLEAD)	79"
48	04-3030-0000	PLUG (EURO) *NOT SHOWN*	1
FASTENERS			
50	00-0500-0503	M5 PLAIN WASHER	4
51	00-0500-0723	M5 NYLOC NUT	2
52	00-0510-0171	M5 x 10 SOCKET SET SCREW	1
53	00-0512-0013	M5 X 12 POZI PAN HEAD SCREW	6
54	00-0540-0013	SCREW, M5 X 40 PAN HEAD	1
55	00-1000-0703	M10 FULL NUT	1
56	00-0400-0523	M4 SHAKEPROOF WASHER	2
57	00-0410-0023	M410 POZI PAN HEAD	2
58	00-0400-0703	M4 FULL NUT	2
59	00-0308-0013	M3x8 POZI PAN HD SCREW	1
61	00-0300-0503	M3 PLAIN WASHER	1
62	00-0500-0507	M5 BRASS WASHER	3
63	00-0500-0703	M5 FULL NUT	2
64	00-0500-0713	M5 LOCK NUT	1
65	00-0500-0521	M5 SHAKEPROOF WASHER Z/P	1
66	00-1000-0523	M10 SHAKEPROOF WASHER	1
67	00-0520-0013	M5x20 POZI PAN HD SCREW	1
68	00-0518-0013	M5 X 12 POZI PAN HEAD SCREW	1



Tacony CFC

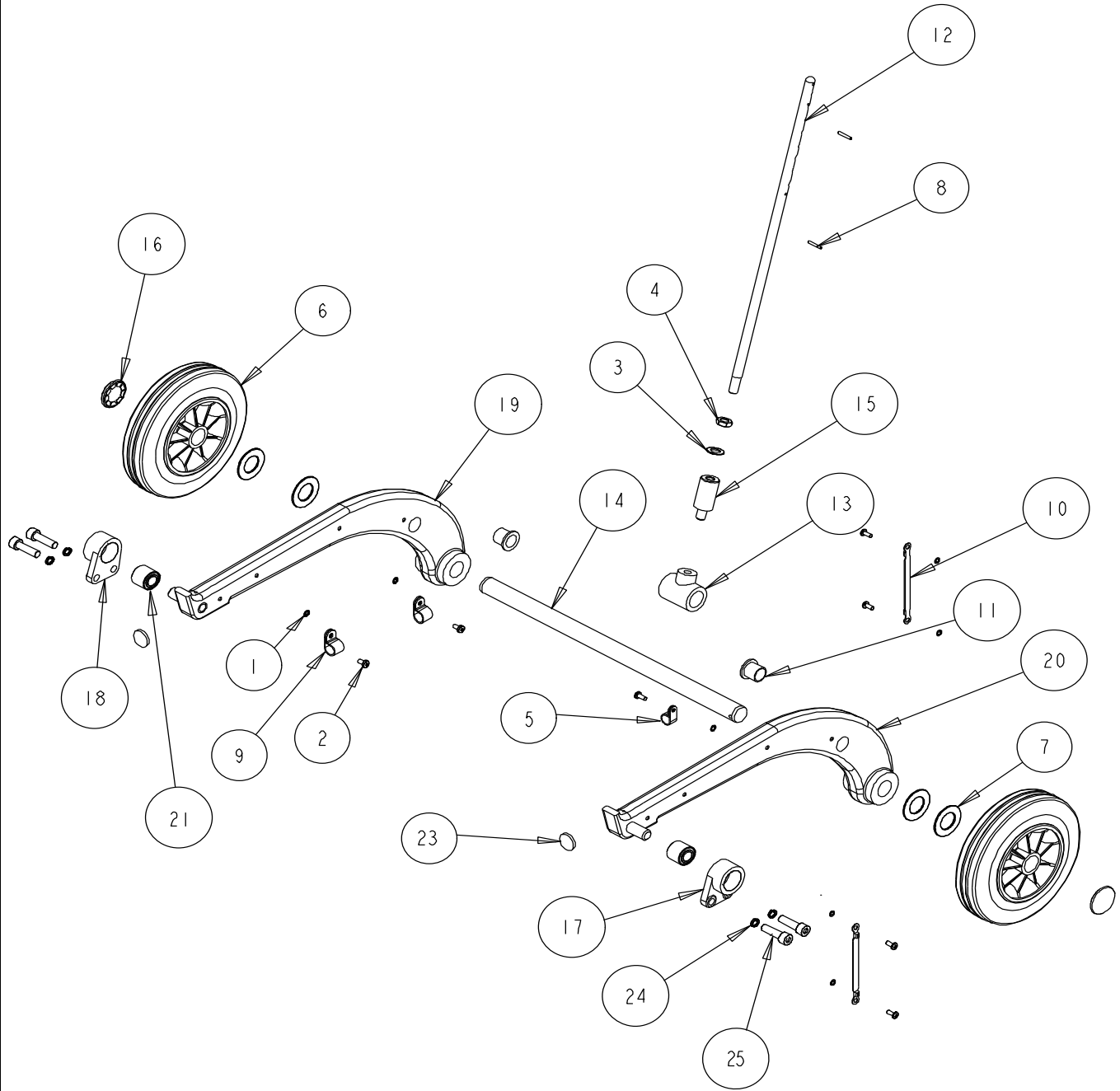
CR76/EURO Head Assembly

Drawing Number: N/A

Date:	3/5/2009		
Machine:	CR76/EURO		
Reference Parts List:	05-4449-0000		
Modified By:	G SECHERE	DESCRIPTION OF CHANGE	ECN #
Revision:	A	COMPONENTS CHANGE	N/A

Tacony CFC	CR76/EURO Head Assembly		
Part Reference: 05-4449-0000			
Date:	3/5/2009		
Machine:	CR76/EURO		
Reference Drawing Number:	N/A		
Modified By:	G SECHERE	DESCRIPTION OF CHANGE	ECN #
Revision:	A	COMPONENTS CHANGE	N/A

Ref. No.	Part No.	Part Description	Qty
CORE COMPONENTS			
1	02-4010-0000	SEALED BEARING	9
2	02-4011-0000	CIRCLIP INTERNAL 35mm	6
3	02-4020-0000	BEARING 6009-2RS	2
4	02-4024-0000	CIRCLIP EXTERNAL 1400-45mm	1
5	02-4073-0000	POLY VEE BELT	3
6	02-4075-0000	HOLE PLUG -50.8 DIA	1
7	02-4179-0000	CR 76 WATER TUBE -2-3/4" EACH	8.25"
8	02-4320-0000	BRASS CUP WASHER No 8	15
9	02-4329-0000	3/8" UNC x 1" HEX SET SCREW BZP	6
10	02-4330-0000	3/8" UNC x 1-1/4" HEX SET SCREW BZP	3
11	02-4335-0000	M10x30 PENNY WASHER ST/ST	1
12	02-4380-0000	CIRCLIP INTERNAL 1300 - 75mm	1
13	02-4449-0000	BRASS LOCK NUT 1/8" BSP	3
14	02-4514-0000	5/8 BSF NYLOC NUT	3
15	03-6936-0000	BEARING SPACER	3
16	03-6937-0000	BRUSH DRIVE PIN	12
17	03-6981-0000	WATER FEED ELBOW	3
18	03-6982-0000	WATER FEED PIPE	3
19	03-6988-0000	COLLAR FOR PIN	3
20	03-6990-0000	BOTTOM COVER	1
21	03-6995-0000	BRUSH PULLEY	3
22	03-6996-0000	MOTOR PULLEY	1
23	03-7000-0000	SPACER	3
24	03-7001-0000	ECCENTRIC PULLEY PIN ST/STL	3
25	03-7002-0000	76 BUMPER SHIELD	1
26	03-7003-0000	MOUNTING PLATE - LS MOTORS	1
27	03-7008-0000	SPECIAL KEYBAR	1
28	03-7009-0000	CR 76 SHAFT EXTENSION	1
29	03-7015-0000	SPACER	3
30	03-7016-0000	PULLEY CARRIER	3
31	03-7278-1000	CR76 BUMPER RUBBER	91"
32	03-7319-0000	WATER TUBE BZP	1
33	03-7668-0000	LIFTING HANDLE	1
34	03-7695-0000	PLAIN KEY	1
35	03-8080-0000	CR/RHD76 EDU BOWL - METRIC	1
36	03-8081-0000	CR/RHD76 SPIGOT PLATE	1
37	03-8082-0000	CR/RHD76 OUTER CENTRAL	1
38	03-8087-0000	CR/RHD76 INNER CENTRAL BEARING SPACER	1
39	03-8119-0000	BOTTOM COVER SPACER	3
40	04-3852-0000	MOTOR 4P LS90PR 1.5kW 230V 50Hz	1
41	03-7944-0000	CIMEX FROM TRUVOX LABEL (LARGE 96 x 85mm)	1
42	04-3602-0000	TERMINAL (RING) *NOT SHOWN*	6
43	72470A	HEAT SHRINK TUBING *NOT SHOWN*	12"
FASTENERS			
50	7CL003	M10 SPRING WASHER ST/ST	11
51	X8217+	5/16 SPRING WASHER	6
52	00-0400-0523	M4 INTERNAL SHAKEPROOF ST/ST	5
53	00-0400-0723	M4 NYLOC NUT ST/ST	3
54	00-0408-0013	M4 X 8 POZI PAN HEAD SCREW ST/ST	5
55	00-0512-0033	M5 x 12 COUNTERSUNK SCREW ST/ST	15
56	00-0600-0503	M6 WASHER ST STL	6
57	00-0600-0523	M6 INTERNAL SHAKEPROOF ST/ST	6
58	00-0600-0703	M6 FULL NUT ST/ST	6
59	00-0606-0171	GRUB SCREW M6 X 6 SOCKET HEAD	2
60	00-0620-0113	M6 X 20 HEX HEAD BOLT ST/ST	6
61	00-0800-0503	M8 WASHER TYPE B S/S	5
62	00-0800-0523	M8 INTERNAL SHAKEPROOF ST/ST	2
63	00-0800-0713	M8 LOCK NUT ST/STL	2
64	00-0812-0093	M8 x 12 CAP HEAD SCREW ST/ST	2
65	00-0816-0123	M8 x 16 BOLT ST/ST	6
66	00-1000-0523	M10 INTERNAL SHAKEPROOF	5
67	00-1000-0703	M10 FULL NUT ST/ST	4
68	00-1020-0123	M10 x 20 BOLT ST/ST	1
69	00-1045-0111	M10 x 20 Bolt Z/P	4
70	X8551+	WASHER 20mm FLAT ZINC PLATED	3



Tacony CFC

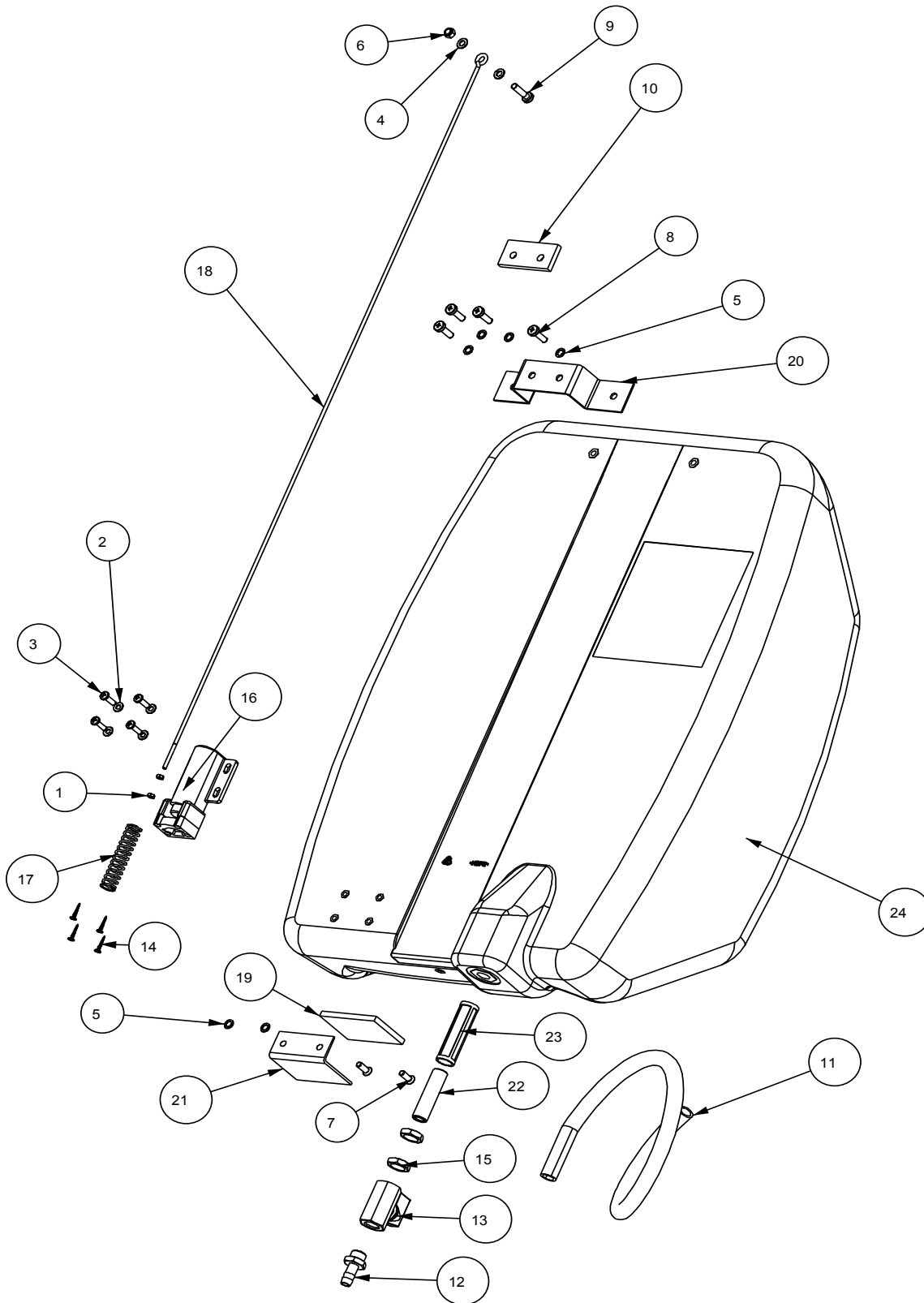
CR76/EURO Chassis Assembly

Drawing Number: 09-1097-0000

Date:	3/5/2009		
Machine:	CR76/EURO		
Reference Parts List:	05-4540-0000		
Modified By:	G SECHERE	DESCRIPTION OF CHANGE	ECN #
Revision:	B	COMPONENTS CHANGE	N/A

Tacony CFC		CR76/EURO Chassis assembly	
05-4540-0000			
Date:	3/5/2009		
Machine:	CR76/EURO		
Reference Drawing Number:	09-1097-0000		
Approved By:	G SECHERE	DESCRIPTION OF CHANGE	ECN #
Revision:	B	COMPONENTS CHANGE	N/A

Ref. No.	Part No.	Part Description	Qty
CORE COMPONENTS			
5	02-4279-0000	P CLIP (WATER HOSE)	1
6	02-4137-0000	8" WHEEL MODIFIED	2
7	02-4363-0000	WASHER (USED AS WHEEL SPACER SUBJECT TO QTY CHANGE)	4
8	02-4208-0000	1/8 x 7/8 SELLOCK PIN BZP	2
9	02-4448-0000	P-CLIP	2
10	03-6899-0000	EARTHING LEAD INTEGRAL TERM	2
11	03-6919-0000	FORK HANDLE BUSHING (BLACK)	2
12	03-7279-0000	SWIVEL CLAMP ROD	1
13	03-7306-0000	TEE PIECE	1
14	03-7308-0000	AXLE - CR48, CR61	1
15	03-7318-0000	TEE PIECE EXTENSION	1
16	03-7658-0000	STARLOCK HUB CAP	2
17	03-6926-0000	PIVOT BRACKET L/H ALOCROM &	1
18	03-6925-0000	PIVOT BRACKET R/H ALOCROM &	1
19	03-8173-0000	FORK CASTING R/H R61 AND R76	1
20	03-8172-0000	FORK CASTING L/H R61 AND R76	1
21	03-6929-0000	SILENT BEARING	2
22	04-3688-0000	20MM BLACK POLYTHENE CONDUIT *NOT SHOWN*	43"
23	02-4187-0000	BUFFER RUBBER 19mm x 1.5mm	2
FASTENERS			
1	00-0500-0521	M5 INTERNAL SHAKEPROOF	7
2	00-0512-0013	M5 x 12 POZI PAN HEAD SCREW ST ST	7
3	00-1200-0503	M12 WASHER FORM B ST/STL	1
4	00-1200-0713	M12 LOCKNUT ST/STL	1
24	7CL003	M10 SPRING WASHER ST/ST	4
25	00-1030-0103	M10x30 CAP HD SCREW ST/ST	4



Tacony CFC

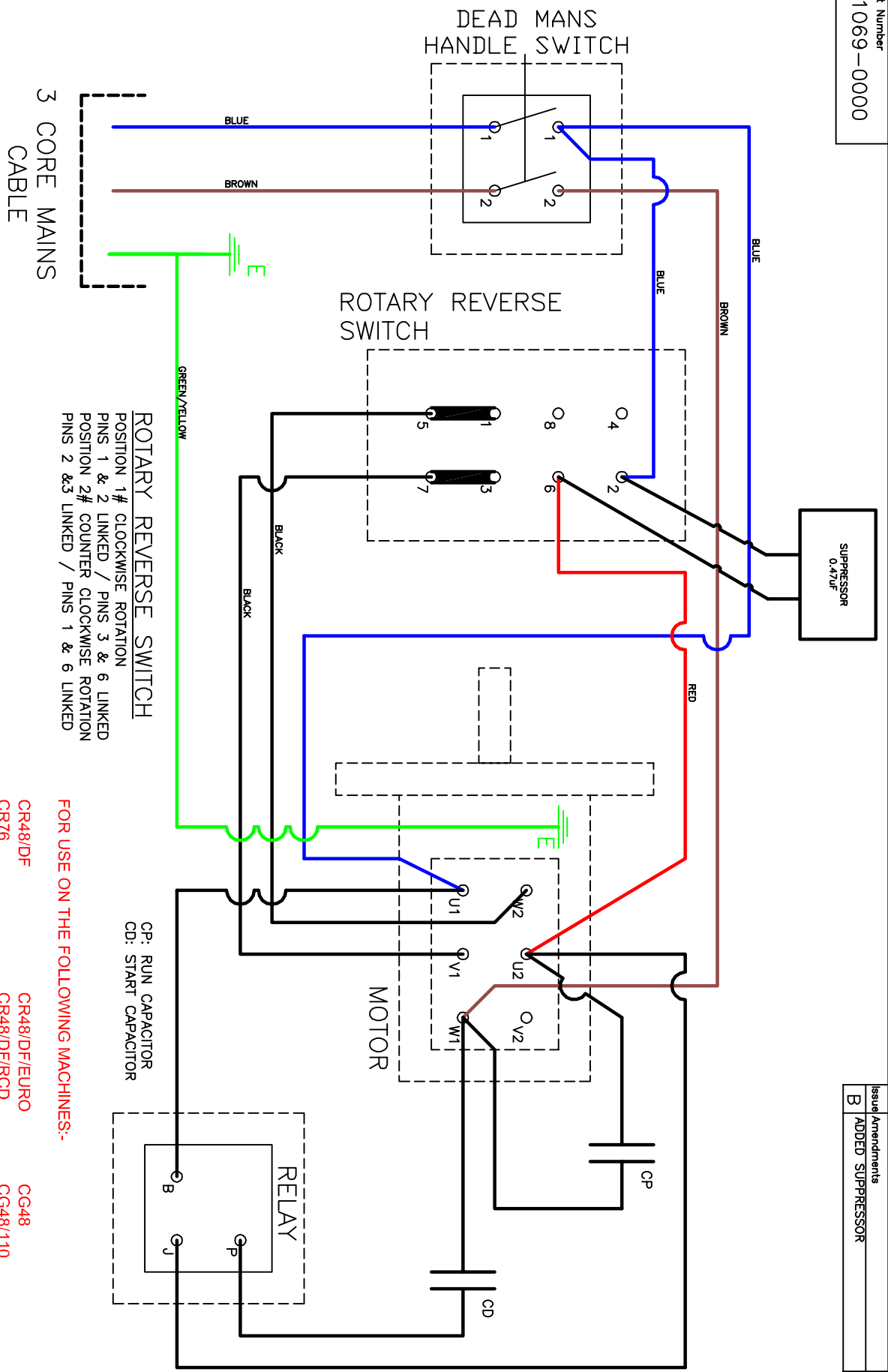
Cyclone Range Tank Assembly

Drawing Number: N/A

Date:	9/10/2009		
Machine:	CYCLONE RANGE MACHINES		
Reference Parts List:	05-4253-0000		
Modified By:	G SECHERE	DESCRIPTION OF CHANGE	ECN #
Revision:	C	INCREASED QTY OF #5 TO 6 & #8 TO 4	0135

Tacony CFC		Cyclone Range Tank Assembly	
Part Reference: 05-4253-0000			
Date:	9/10/2009		
Machine:	CYCLONE RANGE MACHINES		
Reference Drawing Number:	N/A		
Modified By:	G SECHERE	DESCRIPTION OF CHANGE	ECN #
Revision:	C	INCREASE QTY OF #5 TO 6 & #8 TO 4	0135

Ref. No.	Part No.	Part Description	Qty
CORE COMPONENTS			
10	02-3278-0000	NEOPRENE ADHESIVE STRIP	4"
11	02-4179-0000	SILICON HOSE (CR TANK) 1.6M	63"
12	02-4212-0000	WATER OUTLET BRASS NICKEL	1
13	02-4213-0000	BALL VALVE	1
14	02-4360-0000	SCREW SELF TAPPER	4
15	03-3475-0000	1/4 INCH BRASS HEXNUT	2
16	03-7297-0000	WATER VALVE (BLUE)	1
17	03-7302-0000	SPRING LEE LC 0594 MWTO SPEC.ISS 01	1
18	03-7303-0000	SOLUTION TANK ROD	1
19	03-7304-0000	FOAM HANDLE PAD	1
20	03-7311-0000	TANK BRACKET TOP	1
21	03-7312-0000	SOLUTION TANK BRACKET LOWER	1
22	03-7661-0000	VALVEINSERT	1
23	03-7662-0000	FILTER (NYLON)	1
24	03-8178-0000	CR RANGE SOLUTION TANK	1
FASTENERS			
1	00-0300-0703	M3 FULL NUT ST/ST	2
2	00-0400-0503	M4 WASHER FORM 'A' ST/ST	4
3	00-0412-0013	M4 X 12 POZI PAN HEAD SCREW ST/ST	4
4	00-0500-0503	M5 WASHER FORM A ST/ST	2
5	00-0500-0521	M5 INTERNAL SHAKEPROOF	6
6	00-0500-0723	M5 NYLOC NUT ST/ST	1
7	00-0512-0033	M5 x 12 COUNTERSUNK SCREW ST/ST	2
8	00-0516-0013	M5 x 16mm POZI PAN HD SCREW ST/ST	4
9	00-0520-0013	M5 x 20 POZI PAN SCREW ST/ST	1

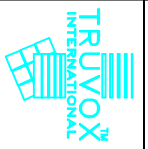


ROTARY REVERSE SWITCH
 POSITION 1# CLOCKWISE ROTATION
 PINS 1 & 2 LINKED / PINS 3 & 6 LINKED
 POSITION 2# COUNTER CLOCKWISE ROTATION
 PINS 2 & 3 LINKED / PINS 1 & 6 LINKED

FOR USE ON THE FOLLOWING MACHINES:-

- | | |
|-----------------|----------------|
| CR48/DF | CR48/DF/EURO |
| CR76 | CR48/DF/RCD |
| CR76/EURO | R48/HD |
| R48/HD/220 | R48/HD/EURO |
| R48/HD/R/230/50 | RHD76 |
| RHD76/EURO | RHD76/110/50 |
| | CG48 |
| | CG48/110 |
| | CG48/110/50-60 |
| | CG48/EURO |
| | CG48/EURO/60 |
| | R48/HD/110/50 |

CP: RUN CAPACITOR
 CD: START CAPACITOR



3RD ANGLE PROJECTION
 DIMENSIONS IN MILLIMETRES
 DO NOT SCALE DRAWING
 ©COPYRIGHT

Material	General Tolerance
Finish	±0.25
Scale	N.T.S.
Drawn	Date
S JONES	02.04.09
Checked	
G.SECHERE	

TRUYOX™ INTERNATIONAL LIMITED
 (CIMEX) WIRING DIAGRAM WITH
 LEROY SOMER MOTOR

Drawing/Part Number
09-1069-0000

RED ON MASTER